

Prepared by: Zieske Land Surveying, Inc. Address: Box 94, Windom, MN 56101 Phone: (507) 831-0100

**UNITED STATES PUBLIC LAND SURVEY CORNER CERTIFICATE FOR**

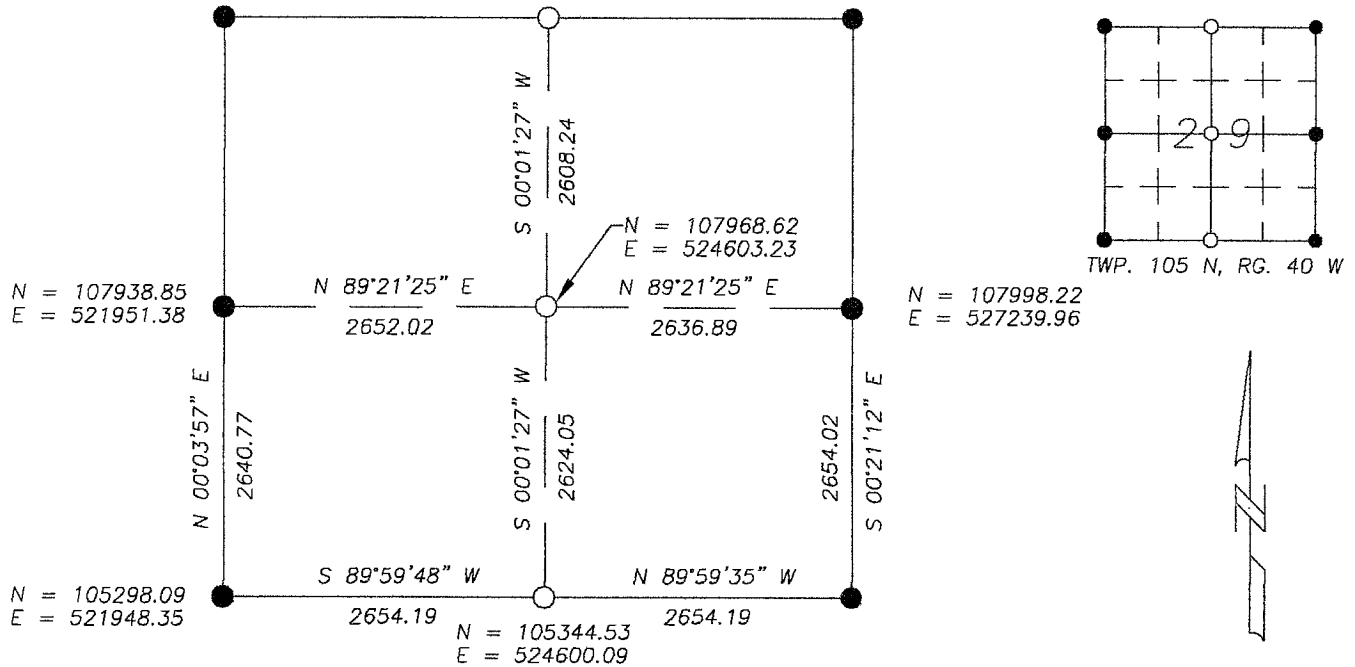
Land survey monuments situated in Section 29, Township 105 North, Range 40 West, of the Fifth Principal Meridian, Murray County, Minnesota..

Previously recorded in N/A in County Recorder's Office.

(Show reason for preparing this certificate, the evidence and detailed procedure used in establishing the corner position & monumentation found or placed.)  
 MONUMENT DESCRIPTION AND REMARKS: On November 20, 2012 we dug with backhoe for South 1/4 Corner & found no evidence of corner at occupation line North & South. County Records show no information for corner. I set a 5/8" Iron Stake with survey cap 23008 on centerline of Township Road midway and on the occupation line North & South. I also set a survey marker spike with cap for North 1/4 Corner at centerline of road in line with occupation South as practical location. County Highway records shown no information for corner.

MURRAY COUNTY COORDINATES NAD-83 (2007) PLAN-VIEW

N = 110576.86  
E = 524604.33



I hereby certify that this land surveying document was prepared and related survey work was performed by me or under my direct supervision and that I am a duly licensed Land Surveyor under the laws of the State of Minnesota.

*Perry L. Zieske* 11-27-12  
 Signature Date  
 Perry Zieske  
 License number 23008

Corners to be Indexed

Corners	Section	Township	Range
N 1/4	29	105	40
S 1/4	29	105	40
CTR.	29	105	40